



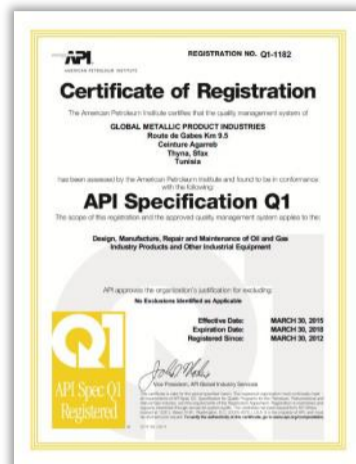
HIGH PRESSURE ACCESSORIES



INTRODUCTION

We offer you a wide range of high pressure, dilling through equipments, christmas tree, choke and kill system accessories. With a big raw materiel hub, and a big variety of diameters for carbon steel and chromium materials, imported from the most trusted manufacturer of used steel in oil and gas industry, we are a one source for many high pressure products and accessories in a considerable delay.

QHSE API CERTIFICATES



API SPEC Q1

CERT# Q1-1182



ISO 9001 (2008)

CERT# 1375



BS OHSAS 18001 (2007)

CERT# 01 113 1418000

API MONOGRAMS CERTIFICATES



API SPEC 6A

CERT# 6A-1221



API SPEC 16A

CERT# 16A-0440



API SPEC 16C

CERT# 16C-0338

- **API SPEC 6A** : Specification for Wellhead and Christmas Tree Equipment
- **API SPEC 16A** : Specification for Drill Through Equipment
- **API SPEC 16C** : Specification for Choke and Kill Equipment

TYPES OF PRODUCTS

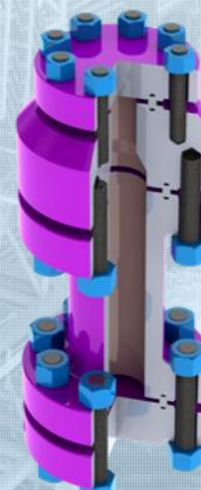
We design, manufacture, overhaul, inspect and test the following equipments in all sizes and pressure rating according to the requested applicable stanadrd.



• Wellhead/Drill Through Integral Diverter Spool



• STUB-ACME Threaded Crossover for Wellhead



• Various Assembled Accessories

Blind Flange 6B

Double Studed

Spacer / Adapter

Studs and Nuts

Blind Flange 6BX

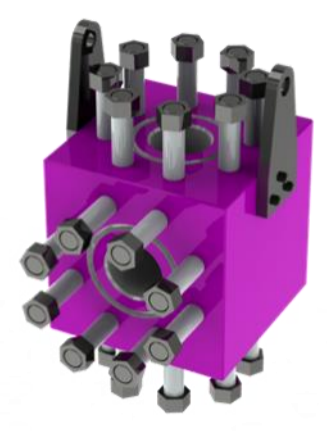


HIGH PRESSURE ACCESSORIES



| TYPES OF PRODUCTS

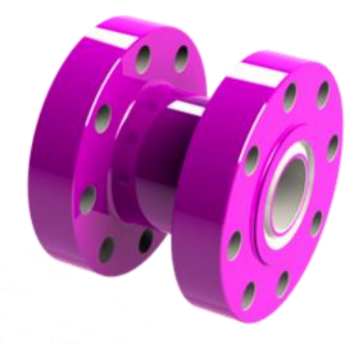
We design, manufacture, overhaul, inspect and test the following equipments in all sizes and pressure rating according to the requested applicable standard.



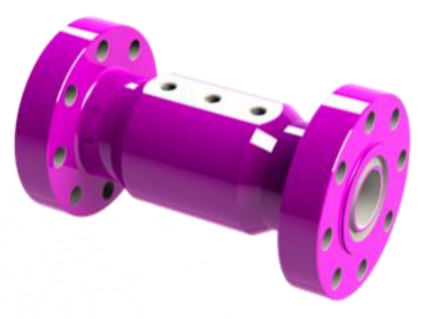
- Studded Cross with 3, 4 or 5 orifices



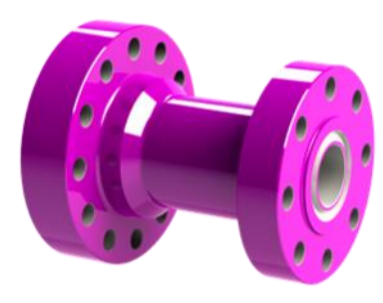
- Semi-Integral Flanged Elbow/Tee



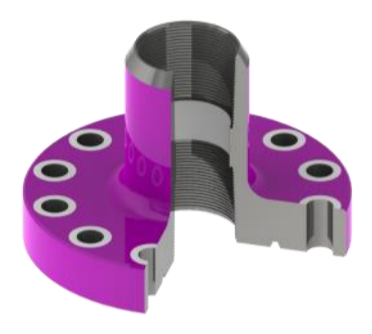
- Integral Spacer Spool



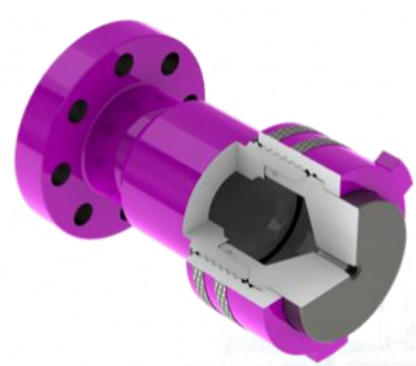
- Gauge / Instrument Spool



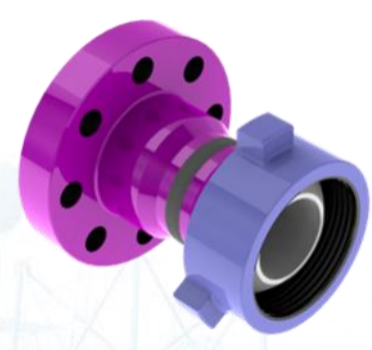
- Integral Adapter Spool



- Threaded Adapter Flange One side / Be-side



- Flanged Union Adapter (Integral)



- Flanged Union Adapter (Welded)



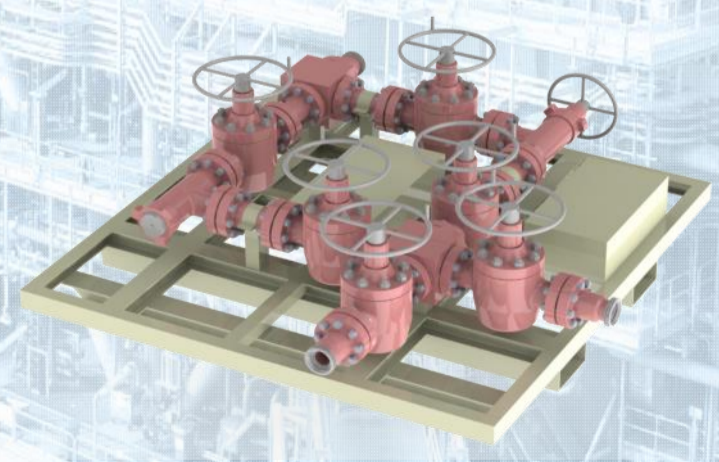
- Union To OCTG Adapter Crossover (Integral)



- Buffer Manifold for Choke (welded)



- Risers / Rigid Chokes (Integral or welded)



- Choke Manifold and Kill System Design, Manufacture, Assembly and Test, with pressure test capability in extreme conditons, minimum and maximum design temperature and pressure test upto 15 000 PSI



SUBSIDIARY OF GLOBAL GROUP - All Rights Reserved
 Adress : Global Group - Route de Gabes km 9.5
 ceinture Agareb 3084 Sfax - Tunisia
 Tel : +216 74 68 63 48
 Cell : +216 98 36 40 70
 Fax : +216 74.68 63 49
 e-mail : sales@sniper-co.com
 www.sniper-co.com

